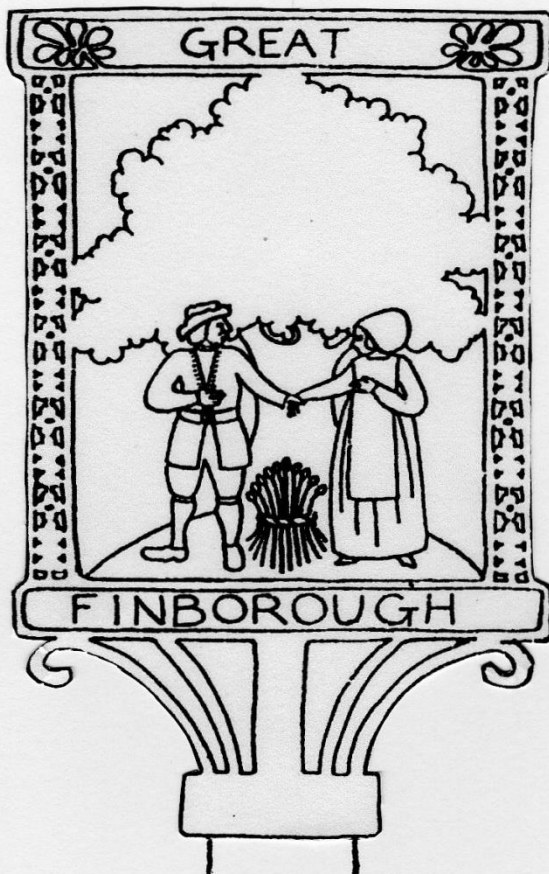


GREAT FINBOROUGH NEWSLETTER



**SEPTEMBER 2014
ISSUE 451**

VILLAGE DIARY – SEPTEMBER 2014

4	9.45am	Candlestick Club Trip
8	6pm	Brownies, Pettiward Hall
8	7.30pm	Parish Council Meeting
9	9.30-1.30am	Coffee morning, Chestnut Horse
13		SHCT Annual Cycle Ride
15	6pm	Brownies, Pettiward Hall
17	7-7.30pm	Buxhall WI, Buxhall Village Hall
22	6pm	Brownies, Pettiward Hall
27	11am- 2.30pm	Ladies who Lunch, Pettiward Hall
28	2.30pm	Onehouse Ramblers, Onehouse Church Room
29	6pm	Brownies, Pettiward Hall

VILLAGE DIARY – OCTOBER 2014

6	6pm	Brownies, Pettiward Hall
13	6pm	Brownies, Pettiward Hall

ST JOHN'S TABLE TENNIS

Thursday Nights 7.30-9.30pm: 11 and 25 September

In the Church Room, Onehouse

Bats & balls provided. £2 per session including refreshments.

New and experienced players welcome.

Give me a ring for further details.

Derek Ames (613328)

The Newsletter is produced by Great Finborough Parish Council, printed by Gipping Press, and distributed to all households in the village free of charge. Claims made have not been verified. For these the newsletter disclaims responsibility.

Editorial

From the turnout on Saturday 9 August it was clear that a great many village people were sorry to see Angela Crocker depart The Chestnut Horse. She made a good job of developing a pub that welcomed eaters and drinkers alike, and she made sure the pub played a full part in community life with coffee mornings, fund raising events and her support of the Race of the Boggmen. She will be missed and we wish her well.

We welcome Jennie and Andrew Craine as the new landlords. Andrew was the chef there already so he knows what we like to eat! As Greene King recently sold the pub to Hawthorn Leisure Ltd with 274 other 'non-core assets' (pubs) for £75.6M, we look to see what will be different and whether Angela's ambition to bring the Post Office back to the village can be fulfilled. A post box would be nice!

If you know anyone who has recently moved to the village, or moved out, please let me know. 15 September is the copy deadline for material for the October edition. If you need to contact me 'phone, email or call in to Park Cottage any time. The kettle is always on.

Sally Gooch

ALL SEASONS LANDSCAPE GARDENING

- Garden Landscaping • Turf Laying •
- Paths & Patios • Garden Maintenance •
- Hedge Cutting • Fencing •
- Specialise in low maintenance gardens •

Reliable family business Fully Insured & Guaranteed

For FREE estimates and more information on our service call **Simon** on

01449 771276/07922 035204

email: info@allseasonslandscapegardening.co.uk

www.allseasonslandscapegardening.co.uk



News from the Parish Council

June Parish Council Meeting

At the Parish Council meeting on 14 July 2014, discussion and decisions included:

- It was resolved to adopt the amended Suffolk Code of Conduct
- A complaint by the Pettiward Hall Management Committee about an error in the newsletter was discussed
- The marquee lending agreement
- The loss of the post box
- A community litter pick in the Autumn
- Storage of the Council's archive
- The Council's bank account
- The Council had no objection to the application to remove the agricultural occupancy condition on Valley Farm Bungalow, Valley Lane or alterations associated with conversion of a storage room to provide a WC and wash basin including insertion of partition wall and replacement window at The Butterfly, Borough Lane. It objected to the erection of a 2 bedroom chalet bungalow (following demolition of existing garage) at 4 The Green, Church Road
- Rewts was appointed to survey and report on the village's Council owned trees
- It was resolved to replace the posts on the village green
- The wildflower meadow
- An offer from the Allotment Association to cut back the hedges
- Management of the village website.

At the Parish Council meeting on 29 July 2014, discussion and decisions included:

- The Council had no objection to the planning application to erect a single storey rear extension (following demolition of existing) at Ladybird Cottage, High Road
- It noted that MSDC had granted approval for alterations associated with conversion of a storage room to provide a WC and wash basin including insertion of partition wall and replacement window, The Butterfly, Borough Lane and

conversion and extension of an outbuilding to form a granny annex at 3 White Horse House, Church Road . An application to erect a 2 bedroom chalet bungalow (following demolition of existing garage) at 4 The Green, Church Road was refused.

- It was agreed to replace the 5 a side football pitch nets.

The next Parish Council meeting is on Monday 8 September at 7.30pm in Pettiward Hall. You are welcome to attend. **Norman Vendittelli**

TOM'S GARDEN MAINTENANCE



TAKING CARE OF ALL YOUR GARDENING NEEDS

FRIENDLY LOCAL SERVICE

FLOWER 'N VEG BEDS, GRASS CUTS, HEDGE TRIMMING,
STRIMMING, ROTAVATING, WEEDING, PRUNING,
PLANTING, CHAINSAW WORK, SHEDS 'N FENCES PAINTED,
TIDYING UP, AND MUCH MORE!

CALL TOM LORD ON 07595 042331 or 01449 674284

News from your District Councillor

The Chestnut Horse

Many people from Finborough and further afield will be sorry that Angela has given up the tenancy of the pub. I add my thanks to her for enthusiasm and energy in providing a valued service for the community. I supported the Parish Council in formally recognising the importance of the pub as an Asset of Community Value, and am investigating how that registration may help us retain it.

Individual Electoral Registration

Government has this year introduced a change to voter registration, and most of us should soon receive a letter confirming we have been transferred to the new system. For new residents, and wherever a query arises, there will be a form to complete, generally asking for your National Insurance number and date of birth. You can also register on line at www.gov.uk/register-to-vote

Missing Post Box

I have been harrying Royal Mail regarding their disgraceful failure to provide a replacement post box in the centre of the village. Given they had a year's notice that it needed to move and the Parish Council's offer of a site, it is unacceptable that the village has been left without a post box for 2 months. I have formally complained to both Royal Mail and the Postal Redress Service, and am preparing a complaint to OfCom on the basis that Royal Mail is not fulfilling its required service level which requires that there should be a post box within 0.5 miles by straight line distance of at least 98% of delivery points nationally. For the other 2% Royal Mail must provide a means of access to the universal service (e.g. collection or delivery from very remote or isolated locations) to meet the reasonable needs of users.

Solar Power

As you may have read or seen, the District Council is at last installing photo-voltaic panels on all suitable council homes, and we will all benefit from the income these produce to off-set cuts to funding from Government. Some lucky residents will also see a reduction in their electricity bills. To get in touch with me, see Who's Who.

John Matthissen



Hello Everyone...

I am pleased to say that there have been no crimes again to report over the last month.

Mid Suffolk Safer Neighbourhood Team news

I had a lovely lunch with the group who attend The Hesselton Village Hall lunch club fortnightly and then gave a talk on scams and fraud offences, sharing information about how to protect yourselves and handing out purple bells and stickers for 'No cold callers'.

I was also recently at Buxhall fete with my colleague which was very well attended and many people came over to talk which was brilliant. A lot of discussion was had around Community Speedwatch and safety on our roads. If any of you feel passionate enough about keeping your village safe and can offer a couple of hours a month to conduct some speed checks with training from ourselves please contact me. This is not an onerous task. I am looking to resurrect the Great Finborough scheme and bring Buxhall on board too. We already have 5 schemes running covering 8 local villages. A meeting was held recently with all the schemes. 614 letters have been sent out since the start of 2014 and a few repeat offenders have been targeted.

I am pleased to inform you that we have a new team member at Elmswell with PCSO 3225 Ryan Brunning replacing Colette who has moved to the Needham Market office. Ryan will be responsible for the same villages as me (Great Finborough, Beyton, Buxhall, Drinkstone, Felsham, Gedding, Haughley, Hesselton, Rattlesden and Thurston). The Elmswell Team covers 18 villages and Needham Market covers 24 so when we are at work we go to any of them as required. Ryan has already got stuck in and recently attended the British Legion fun day in Haughley. To contact us see Who's Who. **PC 421 Annelly Miles**

Adult Education Courses Autumn Term — September 2014

Hillside Community Centre, Stowmarket

Mon – Beginners Cake Decorating, 7pm – 9pm (8wks)

Fri – Watercolour Painting, 10am – 12pm (10wks)

Red Gables Resource Centre, Stowmarket

Sat – Sugarcraft Skills - Christmas Cake Decoration, 10am – 3.30pm (1 day)

Sat – Pruning Through the Seasons, 9.30am – 12.30pm (1 day)

Sat – Festive Christmas Wreaths, Green Holly & Mistletoe 10am-3.30pm (1 day)

Sat – Make Christmas Bunting, Gifts & Decorations, 10am – 3.30pm (1 day)

St Marys Hall, Wolsey Road, Stowmarket

Thu – Sugarcraft, 7pm – 9pm (8wks)

Stowmarket Learning Centre

Mon – Computer Workshop Level 1 & 2, 10am – 12pm

Tue – Book Keeping & Accounts Level 1, 6.30pm – 8.30pm (15wks)

Wed – Computing for Absolute Beginners Step 1, 1pm – 3pm (5wks)

Wed – Digital Photography Beginners, 6.30pm – 8.30pm (5wks)

Wed – Photoshop Beginners, 6.30pm – 8.30pm (5wks)

Thu – Introduction to Counselling Skills, 12.30pm – 3pm (10wks)

Thu – German for Beginners, 7pm – 8.30pm (10wks)

Fri – Book Keeping & Accounts Level 1, 9.30am- 11.30am (15wks)

Sat – Computerised Accounts (Sage), 9.30pm – 11.30am (15wks)

Sat – Relaxation & Stress Management, 10am – 3.30pm (2wks)

Sat – Designing & Planting your Garden, 10am – 3.30pm (2wks)

Stowmarket High School

Mon – French for Beginners, 7pm – 8.30pm (10wks)

Tue – Italian for Beginners, 7pm – 8.30pm (10wks)

Tue – Learn to Draw, 7pm – 9pm (8wks)

Tue - Couture Dressmaking & Millinery, 7.30pm – 9.30pm (10wks)

Tue – German Year 2, 7pm – 8.30pm (10wks)

Tue – Spanish for Beginners, 7pm – 8.30pm (10wks)

Free Maths & English Functional Skills & GCSE courses (free if you do not hold a current GCSE at grade C or above).

Gain a qualification and improve your Maths and English skills.

Find out about fees, enrolling & more information on all our courses at www.westsuffolk.ac.uk, by emailing stowmarket@wsc.ac.uk or by phoning 01449 613903

From the Rectory

Interruptions can be annoying. They can also be a welcome relief. Interruptions can lose us our train of thought. They can also give us a new and more important task. Some people welcome the excitement and uncertainty that they bring. Others do not: they have their plan for the day, or for their life; and stick to it. Holidays are planned interruptions to the normal run. They give us time to think and rest and sometimes to broaden our horizons. We like them. Interruptions can also occur in our minds when we see something 'with new eyes'. They don't have to be the phone call, the knock on the door, or an email. They call us to action.



In the Gospels we hear of Jesus wanting to be alone, reflecting on the death of his cousin John the Baptist at the hand of Herod. The crowd would not let him. They interrupted wanting to be healed. They wanted time and, of course, ultimately they wanted feeding – both physically and spiritually. More than 5,000 according to Matthew. Jesus may well have seen the interruption as a nuisance like we do sometimes, but his actions brought much support and encouragement. Sometimes interruptions are a cry for help and the way we respond says much about us and our attitude to the world and community in which we live.

Will you allow yourself, your life, your thoughts, your views to be interrupted? Do you ever allow it? It might be good for you. With all good wishes.

Rev Chris Childs

Men's Breakfast

This was only the second Men's Breakfast that I have attended. Eight o'clock on a Saturday morning usually beats me. However, this breakfast was held in Pettward Hall and not the usual venue at Onehouse, so right on my doorstep. Of course the real reason for making the effort was the invited speaker. Jeremy Lind is one of the few Clerk of Scales employed by the British Horseracing Authority. On every race day all over the country it is their job to make sure that horses and riders are fully compliant with the very strict rules which govern horseracing.

For an hour and a half, which was all too short, we had a choice of full English or continental breakfast followed by a fascinating talk on how a race meeting is run. Jeremy covered the huge difficulties for jockeys in maintaining their weight (an eyeopener in itself); the consequences of breaking the rules; the intricacies of the betting system; the dangers for riders, and so much more. This was a really fascinating insight into what goes on in the race world in bringing a race meeting to the public so that it is fair and as free as possible from corruption. Jeremy brought with him some items of livery which the riders wear and the saddle worn by Frankel. All in all a really interesting talk and I am very pleased not to have missed it.

Norman Vendittelli



The Buxhall Crown

FREEHOUSE • RESTAURANT

Here at the Buxhall Crown we pride ourselves on only using the freshest ingredients possible for our menu, our deliveries are daily and all our food is cooked for you when you order. This ensures you get your food just how you want it. Everything possible is made on the premises from Craig's delicious sticky toffee ice cream to our apple-smoked pork belly.

On Sundays we also offer a roast rump of mature British beef along with our usual menu. This proves to be very popular so be sure to reserve the beef when you book your table

As usual a warm welcome is guaranteed to eaters, drinkers and dogs
To avoid disappointment please call ahead to book a table on 01449 736521

See our website for more information and for our daily menu
www.thebuxhallcrown.co.uk or email: mail@thebuxhallcrown.co.uk

Buxhall Women's Institute

On 25 June several members and friends enjoyed a really lovely day. Heading for Aldeburgh we stopped off for coffee at Snape Maltings, where several of us forced ourselves to have a little snack! After satisfying our hunger and thirst and having a chat, we mooched round the wonderful store appreciating all that it had to offer. Next stop Aldeburgh. Our 'Entertainments Manager' had booked us in for afternoon tea at the Wentworth. Sea air and all that had revived our sated appetites by 3.30pm when we sat down to sandwiches, cakes and, to top it all, a cream tea! Those sofas at the Wentworth, although so comfy, were difficult to get out of afterwards. Such a lovely time was had by all and the weather was good too.

July's meeting was an occasion that I do not believe WI has experienced before. Members had the choice of two speakers: Julia Gooch demonstrating her talents with flower arranging; and Simon Rivers explaining what lies beneath the car bonnet. As I was one that plumped for the garage owner/mechanic - well you would wouldn't you? - I can only say what an interesting tour 'under the bonnet' we received. Of course we can now all change a wheel - no probs! Back in the village hall, Julia's flower arranging had also attracted a fair number of members, so all in all it worked out well. Julia had very kindly donated her displays to our draw - and I was lucky to be the winner! Our thanks go to both speakers.

TRM Web Design Ltd

website design & website
hosting

domain name registrations
Specialist in bespoke built
sites and database solutions

www.trmwebdesign.co.uk

01473 890994 or

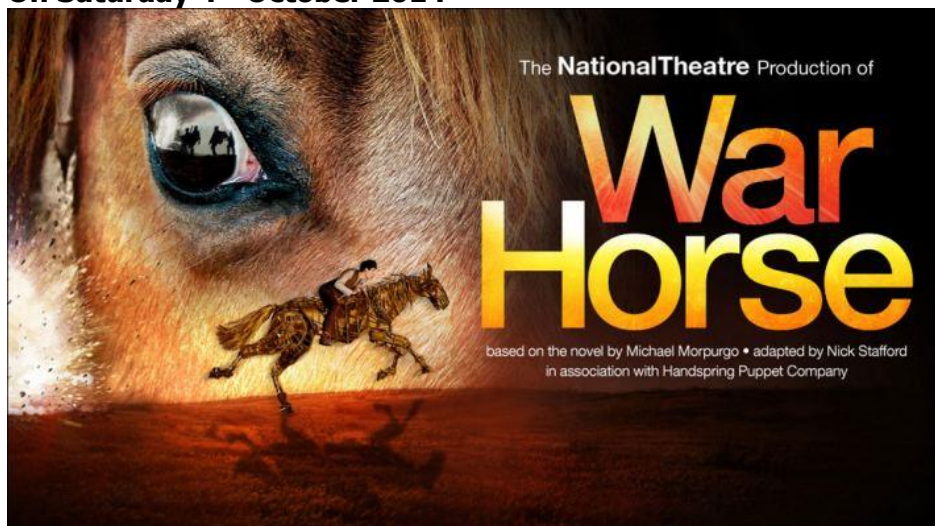
07876 024214

todd@trmwebdesign.co.uk

Sometimes, when I write these articles, it would seem that all WI does is eat! We do, but we do other things as well. If you feel WI might be for you we are in the village hall at Buxhall on the 3rd Wednesday of every month: 7pm for 7.30pm. Ladies come and join us.

Sue Croft

**Great Finborough Coach trip to see War Horse
On Saturday 4th October 2014**



If anyone has not yet the coach fare of £11.50 could you please contact me as I am asking for payment by 14 September 2014.

Irene Bugg (T: 616865 or irene.bugg@btinternet.com)

Too busy?

Let Ovensclean take care of it!

OVENCLEAN.
The original oven cleaning specialists

Tel: 01359 259818
or visit www.ovenclean.com
to find your local specialist

REWTS
Tree & Gardens

- Qualified tree surgeon & horticulturist
- Making gardens beautiful for 13 years

Honest reliable service offering:

- **Tree surgery:** from light pruning to large tree removal.
- **Garden landscaping:** from small back gardens to large estates.
- **Garden maintenance:** from a little weeding to a major clearance.

**Qualifications & portfolio
available for viewing**

Call **REWTS** on 07825253720
or
Email: rewtsgardening@yahoo.co.uk

Haughley Hoofers have been dancing for about 30 years and have performed all over the country at various festivals and in Belgium, France and Germany. We dance a form of Morris dancing which has its origins in the spinning and weaving towns of Lancashire and Cheshire. These were originally processional dances performed by the mill workers on high days and holidays with each town having its own dance. The dancers wore clogs - their everyday footwear – and to add to the show they carried sticks or bobbins from the mills decorated with ribbons and bells. We have our clogs specially made and they are surprisingly comfortable.



This year our performance season began with St George's Day celebrations with other local sides in Hundon. Since then, among other events, we have danced at the Museum of East Anglian Life, Folk at the Boat in Ipswich and the Sheringham Lobster Potty Festival. We took part in Suffolk's own folk festival, Folk East, in mid-August and will be at Days of Dance with other sides in Cambridge and Bury St Edmunds during September.



We always need more dancers (female) and musicians (both sexes). All you need is a basically good level of fitness. If you play a musical instrument come along. It does not matter what you play as long as it is portable. We practise in the Winter on

Sunday nights (7.30 - 9.30pm) in Haughley Village Hall starting 5 October. Come along any Sunday evening before December to try it out or ring me to find out more. It's fun, free, and it keeps you fit!

Gill Brett (T: 673518)



F. G. BROWN – OPTICIANS

Denmark House, 41 Bury
Street, Stowmarket.

Tel: 01449 612812/674030

As independent opticians we offer a more personalised eye care service that you can trust for all the family

Professional Eye care – Quality Products – Personal Service

Opening hours:-Tuesday-Friday 9.00 am – 5.30 pm
Saturday 9.00 am – 5.15 pm

Your sight care is our priority



Charisma Hair

86a Forest Road – Onehouse

01449 677202

- Qualified and friendly staff
- Ear piercing
- Nail Technician
- Full range of styling and colouring and techniques
- Indola products for all your hair and care needs (Retail sizes available)

(Closed all day Mondays)



Calling all cyclists, walkers – and sitters!

I'm sending this in the hope that you read about the Suffolk Historic Churches Trust (SHCT) Annual Cycle Ride in the June edition of the newsletter. So.....did you dust off your bike? Or maybe you have rediscovered your walking boots.....or found a good book you'd like to settle down to? If not, would you be willing to be sponsored to spend some time supporting St Andrew's, our local church, on Saturday 13 September 2014! There's no problem if you are not feeling energetic! A sponsored hour of your time (perhaps with a good book) sitting in St Andrew's and recording any visitors is just as important as cycling or walking – and essential! The church will be open from 9am until 5pm: just choose your slot on the rota.

As a cyclist or walker, all you need to do is visit places of worship in and around Suffolk and officially record the time of your visit at each one. You may take your bike to your starting point by car if you prefer. Half of the money raised will come to our church – and everyone around here knows we need it! The other half, plus any gift aid, will help Suffolk Historic Churches Trust (SHCT) in their ongoing support to maintain church buildings for future generations to enjoy.

I have sponsor forms, a list of churches in and around the area, and any other information you might need. Please do not hesitate to contact me: the sooner the better so that you can encourage as many sponsors as possible! If you cannot help, please spread the word to anyone else who might be interested; this is SHCT's 33rd bike ride event and we would like this to be an especially successful year for St Andrew's! Hoping to hear from you soon.

Sadie Watts (T: 612397) email: watts@snsr.freemove.co.uk

ARBORICULTURAL AND LANDSCAPE SOLUTIONS

ALL ASPECTS OF TREE SURGERY
SOFT AND HARD LANDSCAPING
MAINTENANCE AND LAWN CARE
DOMESTIC & COMMERCIAL CONTRACTS
FULLY INSURED
NPTC QUALIFIED



GREEN SCENE

CONTACT FOR FREE QUOTATIONS AND ADVICE

01359 298141 / 07866 866880
INFO@GREENSCENETREESURGERY.CO.UK

Dennis Green



An independent local company providing exceptional
service in Stowmarket and surrounding areas

A wide range of carpets,
vinyls, tiles, laminate and
wood flooring

Tel: 01449 774 770

Dennis: 07879 485 215



For a personal service and
competitive pricing, give
Dennis a call



"We bring our shop to you"

Unit 6B, The Barn, Glebe Farm, Onehouse,
Stowmarket, IP14 3HL
www.dennisgreenflooring.co.uk

Professional Cleaning Service
for carpets, upholstery
and hard flooring



Tailored quotes to
suit your needs

Tel: 01449 774 770

Stuart: 07580 021 725



Can you order your
"cerveza, vino y
tapas?"



I CAN TEACH YOU!!

Phone **Andrea**
on **01449 736955**

Saddle up for a brand new Hospice cycle event

Inspired by the Tour de France? Then why not pedal together to Paris for St Elizabeth Hospice? Hospice Team 100 is a new mass participation cycle ride which will leave the Hospice in Ipswich for France. A team of 100 supporters will be sponsored for the challenge, which is set to raise a total of £100,000 for the Hospice.

We are really excited about bringing 100 people together for one cause with our new overseas cycle challenge. It is going to be an experience to remember and we are encouraging families, friends, colleagues and groups to join Hospice Team 100 in making a difference to our patients and their carers.

To join Hospice Team 100, you must reserve a place for the special registration evening which takes place on 15 September 2014 between 6pm and 8pm, at the Hospice in Foxhall Road, Ipswich. To reserve your place, visit www.stelizabethhospice.org.uk/team100 or email team100@stelizabethhospice.org.uk

Each cyclist is asked to pay a £99 deposit and raise a minimum of £1,850 in sponsorship; enough to fund a Hospice nurse for two months. There is also an option to pay for your own tour costs. The Hospice will support participants with fundraising tips and workshops. Cycle training sessions will also be offered. Participants must be 16 or over. Under 18s must be accompanied by an adult. Hospice Team 100 will leave Ipswich on 15 September 2015 returning on 20 September. St Elizabeth Hospice improves life for people living with a progressive illness in East Suffolk and Norfolk and relies on public donations and fundraising to provide care free of charge.

Gavin Lamb

Onehouse Ramblers

The next walk will be on Sunday 28 September starting at 2.30pm from the Onehouse Church Room car park for a local walk of about 4 miles, and hopefully in the Autumn sunshine.

Derek Ames (T: 613328)

St. John the Baptist Church, Onehouse

HARVEST SUPPER

Friday 12 September

Church Room, Onehouse at 7pm

Choice of Suffolk Ham, Salmon, or Vegetarian Quiche

Variety of Salads, plus Jacket Potatoes

Delicious Puddings

Tea, Coffee, Squash

Bring your own other drinks

Adults £10, children under 10 £3

Tickets from Derek Ames (Tel. 613328)

Mary Ellam (615203) and Carol Hearn (736025)

Pettiward Hall

In the July edition I made a mistake in editing the report of The Pettiward Hall Management Committee and am pleased to correct it here. The offending sentence should have read: 'The whole building has been double-glazed. This has been funded by grants of £4,989 from Mid Suffolk District Council's Community Buildings Fund and £3,500 from Suffolk County Council's Green Suffolk Fund'.

Sally Gooch

Commemoration of WW1

Great Finborough's congregation on Monday 4 August was very good, spread across the whole evening with audio recollections of the war, readings poems prayer and song. I was surprised but very pleased to see 68 people filing into St Mary's Buxhall for the special evening service. We are grateful to John Biles and the choir for their work. It was a very moving service ending in darkness, which echoed the realisation of the horror that dawned throughout the war; but beginning with the singing of It's a Long way to Tipperary, reflecting the jingoism of the start.

Thank you to all those who made such skilful displays in the churches. They were much appreciated. We are very grateful to Rev Liz for her skilful reworking of the Westminster Abbey Service for both churches; and in both communities for the involvement of parish and community leaders who took a good part.

Rev Chris Childs

World's Biggest Coffee Morning



You are invited to Buxhall Village hall for this year's 'World's Biggest Coffee Morning' on Saturday 27 September from 10am until 12pm. Any donations of cakes and prizes will be gratefully received. For more

information please call me. Doreen and I look forward to seeing you there.

Julie Francis (T: 736185)

The East Anglian Air Ambulance is pleased to confirm that Prince William, the Duke of Cambridge, will join the charity as a helicopter pilot in Spring 2015. EAAA is a 365 day-a-year lifesaving service working across Bedfordshire, Cambridgeshire, Norfolk and Suffolk. It is great to know that the stamps, print cartridges, mobile phones and foreign coins we collect help to keep the helicopters flying. Thank you for all the items donated over the Summer. **Derek Ames (613328)**

Great Finborough Group of Churches Summer Party

This year we gathered 102 people in the Rectory Garden for the annual bash and give our thanks to all who came and contributed in any way. We did not run out of wine or food and some enjoyed themselves with the games left from the Strawberry Fayre the day before. We were pleased to welcome Canon Barbara who, on behalf of Bishop David, presented Mrs Katie Ellis of Harleston with a Long Service award. It seemed odd to some that there were no raffles, tombolas or other money making games or gimmicks. It was just an opportunity to be together in the sunshine with friends and neighbours from the church community: those who normally do so much for others.

Revd's Chris Childs and Liz law

Stowmarket and District Camera Club

Almost everyone enjoys taking photographs these days. However, if you want to develop your skills and take more satisfying photographs, joining a camera club is an excellent step. Stowmarket & District Camera Club is a small, active and long established club with a membership of around 25 people with a wide range of ages, backgrounds and photographic interests. We would like to increase that membership and you do not have to be an 'expert' photographer to join us. All you need is an interest in photography. Our aim is to encourage you to develop your interest and skills, as well as to provide a place to meet a range of friendly people who share your interest. We run a regular programme of talks, competitions, practical sessions, with some outings and social events.

Regular meetings are held at Stowmarket Community Centre, Hillside, Stowmarket, IP14 2BD, usually on the 2nd and 4th Mondays of the month between September & June. We start at 7.30pm but members start to arrive at around 7pm. The next season starts on Monday 8 September. We would love to see you there. For more information see www.stowmarketanddistrictcameraclub.onesuffolk.net or call 01359 244484.

Angela Coster



Blue Badges

Claire Tolliday, the Head of the Financial Inclusion and Advice Service (FIAS) at Suffolk County Council explained the Blue Badge Scheme as it operates locally to the Mid Suffolk Disability Forum on 9 July 2014.

The Blue Badge Scheme is a government scheme operated by the Department of Transport. It is administered by Suffolk County Council and it is enforced in Mid Suffolk by Mid Suffolk District Council. 300 to 500 people apply each week and applications are normally dealt with in 1-2 weeks. People who receive the higher rate of the mobility component of Disability Living Allowance or Personal Independence Payment, and those who are registered blind, automatically receive a Blue Badge if they apply providing proof of their identity and their address.

An administration fee of £10, set by the Department of Transport, is levied although there is no charge for those who are terminally ill. Other applicants outside these categories may be eligible and they are assessed against set of criteria. The applicant has to show a permanent and substantial disability that makes walking very difficult. They may be asked to see a physiotherapist or occupational therapist employed by Access Independent which has a contract with Suffolk County Council to do this work.

If a Blue Badge is refused there is a right of appeal to the Blue Badge Administration Team and, if applicants are still unhappy, an appeal can be made to the Head of FIAS. 60% of appeals are upheld.

Linda Hoggarth

Great Finborough Parish Council Meetings: 2014/2015

All Mondays.
7.30pm start

8 September
2014

10 November
2014

8 December
2014

12 January 2015

9 March 2015

13 April 2015

***Annual Parish
Meeting***

11 May 2015

Diary Notes from St Andrew's Church

Just so that you can plan ahead and keep the dates free we thought you might like to know about this year's Harvest Festival and Supporter's Day, even although they are not until October.

Harvest Festival: Sunday 5 October 11am

This year, with your help, we will be supporting the Food Bank with gifts, and Water Aid with money. The food bank needs items such as tinned meat and vegetables, tea and coffee, toilet rolls, pasta and cereals. Water Aid works to get clean water and sanitation to the poorest and most rural peoples of the third world.

Supporters Day: Saturday 11 October

We officially launch our drive to get £25,000 to build a toilet and kitchen in the church and to do all the necessary repairs too. We now have the approval of the diocese to go ahead and have already collected over £2,000 this year. We will be applying for grants over the coming months to help. Meanwhile the church continues to need to pay its bills and so we hope that you will call in sometime between 10am and 2pm to support the church. There will be coffee, a produce stall and the WW1 exhibition to see. We will also have the plans for the improvements to view. Look out for more information in October newsletter about our 'spend a penny' trail along the church path!

Liz Law



N D GREEN TREE SURGEON

Fully qualified, insured and experienced

For all tree and hedge work. Competitive quotes



Great Finborough — 01449 770620

It's time to sign up for Hospice Girls Night Out

St Nicholas Hospice Care is calling for women to sign up for its 2014 Girls Night Out moonlight walk. Participants who wear pyjamas, trainers and flashing bunny ears will walk either 6 or 11.2 miles around Bury St Edmunds on the evening of 13 September. In 2013 1,020 women took part, raising more than £115,000. More than 1,200 women have already registered for this year. All the funds raised will help to support patients and families in West Suffolk and Thetford. Registration is open now, at £15 per person. Go to www.stnicholashospicecare.org.uk or pick up an application form at any of the Hospice's charity shops. The atmosphere and camaraderie of the event is fantastic.

Here come
the girls!

St Nicholas
Hospice Care

A Registered Charity No. 287773

Christen Savage



Ladies who lunch?
Love shopping?

Then this is for you.

A delicious three course lunch and shopping stalls of clothes and accessories at:

Pettiward Hall, Great Finborough

Saturday 27 September: 11am-2.30pm

Tickets only/ Tickets cost £12.50 from irene.bugg@btinternet.com or 01449 616865

Shopping with Artichoke Fashions, handmade leather bags, Sparkling Scarves, hats, jewellery, other accessories and more. Mini manicures from Leesa. There will be coffee on arrival from 11am and a raffle for St Andrew's Church funds, plus a chance to win a beautiful floral table arrangement.

Organised by the Social and Fundraising Committee of St Andrew's Church

St Andrews coffee mornings

St Andrews Church's fundraising efforts continue apace although the August coffee morning was unable to go ahead as The Chestnut Horse changed hands at the time. We were extremely grateful for Angela's enthusiastic support for our 'second Tuesday monthly' events, and are pleased that Jennie and Andrew have confirmed their support. On 9 September we shall once again be holding a Macmillan Coffee Morning and this will be at The Chestnut Horse.



Irene Bugg

News from the Over 60s Candlestick Club

The Club has had two outings since I last updated you. In July we went to Pensthorpe in Norfolk and saw some very interesting birds at the wild life sanctuary. August had us heading for Colchester Castle. Although it poured with rain as we left Buxhall, the sun broke out as we arrived in Colchester and we all had a very enjoyable day around the castle and its park. They had every kind of swing and slide you could imagine.



KING'S

Property & Garden Care

Phone 01449 737495 mob 0797 1465372
Email; adrian@kingspropertycare.co.uk

Grass & Hedge cutting 
General care and maintenance

 Window Cleaning
Pure water treatment, pole and reach system

Interior/Exterior decorating 
General repair work

On 4 September we are off to Aldeburgh for the day. We shall be picking up in Great Finborough at 09.45 hours, Buxhall at 9.50 hours and on to Harleston for 10.00 hours. This will be our last outing of the season so please support us.

Please let either Katie on 736430 or me (T: 736598) know if you wish to come. New members are always welcome.

Keith Proctor

PARISH REGISTERS

Baptism

We welcome into the family of Christ's Church

At St Mary, Buxhall

4 May 2014
months

Joe Victor Copinger Minoprio, aged 7



Marriage

We pray for God's blessing on those who embark on life together

At St Andrew's, Great Finborough

3 May 2014

Lynette Snell and Neil Wilson

Funeral and Interment

Our love, sympathy and prayers to the families of those who have recently died

At St Mary, Buxhall

16 April 2014

Geoffrey David Woods, aged 90

Cremation

At Seven Hills, Ipswich

20 March 2014

Dorothy Petford of Onehouse

At West Suffolk

22 April 2014

Anthony Gordon Clover of Onehouse, aged 84

Interment of Ashes

At St Andrew's, Great Finborough

15 April 2014

Raymond Seddon – by Father David Finnegan

BARGEWELL SKIP HIRE

2, 3, 4, 5, 6, 7 & 8 yard skips

Long or short term hire

Delivery service 7 days a week

Fast friendly service

Stowmarket 01449 615056

Mobile: 07770 452378

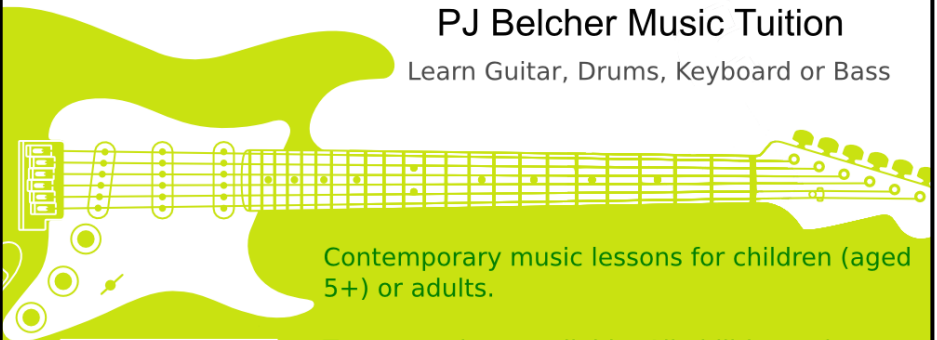
High Rd, Gt Finborough, Suffolk

www.bargewellskiphire.com

Credit cards accepted

PJ Belcher Music Tuition

Learn Guitar, Drums, Keyboard or Bass



Contemporary music lessons for children (aged 5+) or adults.

Taster sessions available. All abilities welcome.

Learn your favourite songs!

07787341642

Find us on facebook.com/pjbelchermusictuition



Time to Replace Your Boiler with the Latest Eco-Technology?

A micro-renewable energy solution based on
your needs can reduce your running costs

Ground & Air Source Heat Pumps

Heat Recovery Ventilation • Solar PV

Solar Thermal • Wood-Burning Stoves

Wood & Pellet Boilers

Grants Available – MCS Accredited

t. 01449 737 494 w. www.ecolivinguk.com

ecoliving®
micro-renewable solutions for a sustainable future



Remembering Village Fairs

"I have never been to Buxhall Church Fête before and it's certainly a very big and successful event. Some of the side shows and games seem rather familiar and I think they used to be part of the fair run by the British Legion in the grounds of Finborough Hall years ago. In those days the prize for the bowling was a live pig. Cart horses from local farms were ridden in races much faster than they were used to. The game that I'm sure would not be allowed today was catching a greasy pig which was contested by local women".

**Trevor Waspe as told to John
Matthissen**

The Pettiward Hall *Little Ernie Lottery*

The winners in the July draw were: Dorothy Rham and Irene Bugg. In August the winners were Sally Nurton and Michel Morel. Each wins £7.

Mary Preece

Thanks from EACH

I would like to thank The Garden Club and everyone who contributed and donated to the Summer BBQ. Your generosity raised a fantastic £450 for East Anglia's Children's Hospices (EACH). Special thanks to the committee for organising the annual BBQ and sincere thanks to Peter and Pat Turner for kindly hosting the Event.

Marion Mason, EACH Volunteer 675447

Finborough & District Garden Club

The traditional Summer holiday for the Garden Club, when we sit back and admire the fruits of our labours and hopefully harvest and enjoy them too, has passed all too quickly and it is time to report on the events of the last two months as well as look forward to the season of Autumn meetings.

The Club hosted the annual Open Gardens on a day which dawned wet but which cleared up nicely for the afternoon of 6 July. Visitor numbers were lower, especially of those travelling some distance, but given the morning weather this is perhaps not surprising. However ticket sales, proceeds from the plant stall, tombola, teas, and donations meant that we were able to donate the grand sum of £1,020 to St Andrews Church. The Club is tremendously grateful to everyone who opened their gardens, displayed their classic cars, baked cakes, helped out on the day or just supported our endeavours. The preview evening BBQ 'on the Presidents Lawn' for those who volunteered to open their gardens was very well supported and thoroughly enjoyed by all.

This year it was decided to raise funds for EACH at the major social occasion of the gardening year; the annual club BBQ. This was held on 31 July and saw most of the Club's membership plus guests invade Pat and Peter Turner's garden at the Little House to celebrate another successful Garden Club year. The weather was warm and fair and the evening reflected the generous and sociable spirit of the Club with £450 being raised. Thank you all. The horticultural aspect of the club was covered by admiration of Pat's and Peter's garden. Thank you both. Your kindness in allowing us to use your lovely garden for this occasion is much appreciated by us all. I am sure that the members would also wish me to express our thanks to the team of cooks: John, Ian and Peter. They ably ensured that we all ate at the same time. Thanks to those who made a wonderful array of delicious salads and desserts and to the members who assisted with the setup and take down of the marquee, tables and chairs.

The first event in the new Garden Club year is a talk to be given by John Hewson. He will be talking about Greenhouse Gardening on 11 September at 7.30pm in the Upper Room of the Pettward Hall. If you

are interested in joining the garden club or would like to join us for any event you will be very welcome. Meetings are held on the second Thursday of the month. Membership is only £15.00 per household per year and there is a charge of £2.50 for guest attendance at any single meeting. For further information contact John Davey or me - see Who's Who.

Judith Cameron

The Sewing Room

***Alterations to garments and
furnishings. Name label sewing -
in service for school uniforms.***

***Repairs to hems, seams,
reducing or lengthening
garments etc. I am always
happy to help!***

Lizzy Johnson

01449 737414

07740 987311

***Meadow View Brettenham Road
Buxhall Stowmarket IP14 3EA***

thesewingroom@tiscali.co.uk



Celsius **Oven cleaning**

ovens-AGA's-extractors-microwaves-hobs



Member of
The Association of
Approved Oven Cleaners
www.aoc-cleaning.co.uk

**Eco friendly – No mess
Prices start from £39 for a
standard single oven
Fully insured**

Contact Kevin 07540286900

WALL TO WALL BUILDERS

Experienced, Professional & Reliable

- Extensions
- New Builds
- Listed Buildings
- Loft Conversions
- Kitchens & bathrooms
- All Renovation work & Repairs

Richard Bateson

M: 07799 114814

T: 01449 741510

richard@bateson1.eclipse.co.uk

www.walltowallbuilders.co.uk



Local Caring Independent Funeral Service

24 Hour Personal Service * Private Chapel * FREE Parking

www.andrewbingham.co.uk

01449 771666

The Nutshell, Milton Road South, Stowmarket, IP14 1EZ



Golden Charter
Funeral Plans



TOMLINSON GROUND CARE

Horticultural & Garden Machinery Suppliers

Sales • Service • Parts • Repairs

1 Brettenham Road
Buxhall, Stowmarket, IP14 3DL
www.tomlinsongroundcare.co.uk

01449 736060

Opening Times

Mon– Fri 7.30 am to 5.00 pm

Saturday 7.30 am to 12.30 pm

Visit our LARGE SHOWROOMS



This advert is too small to be able to show you all we have to offer, please visit our website or come and have a cup of tea/coffee and discuss your requirements.

**Main Al-Ko and John Deere Dealers,
over 15 ride-on and 25 walk-behind mowers to Try before You Buy**

CHURCH SERVICES IN THE BENEFICE FOR SEPTEMBER 2014

Sunday 7 September

Holy Communion
Morning Worship and Baptism
Sung Eucharist – Patronal
All Age Worship

12th Sunday after Trinity

Little Finborough 9am
Onehouse 9.30am
Buxhall 11am
Combs 11am

Sunday 14 September

Holy Communion
Holy Communion
Matins
Morning Prayer
Messy Harvest Festival
Deanery Confirmation

13th Sunday after Trinity

Harleston 9.30am
Shelland 9.30am
Buxhall 9.30am
Great Finborough 11am
Onehouse Church 11am
Combs 4pm

Sunday 21 September

Holy Communion
Holy Communion (said)
Holy Communion
Morning Praise and Baptism
Holy Communion
Harvest Festival

Saint Matthew

Little Finborough 9am
Buxhall 9.30am
Onehouse 11am
Combs 11am
Great Finborough 11am
Shelland 3pm

Sunday 28 September

Holy Communion
Holy Communion
Holy Communion
Holy Communion
Harvest Festival
Harvest Festival

15th Sunday after Trinity

Harleston 9.30am
Combs 11am
Great Finborough 11am
Onehouse 11am
Buxhall 3pm
Little Finborough 3pm

Sunday 5 October

Holy Communion
Sung Eucharist
Reflective Morning Prayer
Harvest Festival
Harvest Festival
Harvest Festival

16th Sunday after Trinity

Little Finborough 9am
Buxhall 9.30am
Shelland 9.30am
Combs 11am
Great Finborough 11am
Harleston 3pm

Evening Prayer: Buxhall Wednesdays 6pm; Great Finborough Thursdays 4.30pm

WHO'S WHO IN GREAT FINBOROUGH

Chair, Parish Council	Norman Vendittelli	677940 norman.vendittelli@hotmail.co.uk
Clerk, Parish Council	Paula Gladwell	737942 finboroughparishclerk@gmail.com
District Councillor	John Matthissen	771742 john.matthissen@midsuffolk.gov.uk
County Councillor	Penny Otton	737870 penny.otton@councillors.suffolkcc.gov.uk
Newsletter Editor	Sally Gooch	677940 sally.gooch@btinternet.com
Priest in Charge	Rev. Chris Childs	673280 <i>Combs Rectory, 135 Poplar Hill, IP14 2AY</i> revcchilds@aol.com
Associate Priest	Rev. Liz Law	774878 <i>Sunnyside, The Green, Gt Finborough, IP14 3AB</i> rev.liz@btinternet.com
Chair of the F&P Committee	John Kendall	736264
Church Warden	Nigel Brown	675344
Pettward Hall Management Committee	Mary Preece	771360 mary.preece1@btinternet.com
Lettings/Keyholder	Delia Prior	07513 140072 deila.prior@btinternet.com
Great Finborough & Buxhall Under 5s	Gail Jarrett	674538
Great Finborough & Buxhall Brownies	Mary Smyth	672533 mary@blossomz.co.uk
Allotments Association	Keith Proctor	736598
Candlestick Club	Judith Cameron	672978 judyandian@btinternet.com
Great Finborough & District Garden Club	John Davey	674401 john@abbeyclassics.co.uk
Neighbourhood Watch Co-ordinator	Nigel & Jeannette Edwards	612274
Chaplin's Newsagent	Jennie & Andrew Craine	612298
The Chestnut Horse	Stephen Dodd	613208
Head, Great Finborough	headteacher@greatfinborough.suffolk.sch.uk	
Primary School	PCSO Ryan Brunning	101
Police (Elmswell)		613541
Stowmarket High School		776000
Stowmarket Health Centre		678333
Combs Ford Surgery		613143
Stowmarket Library		

Village website: www.great-finborough.co.uk

Primary School website: www.greatfinborough.suffolk.sch.uk