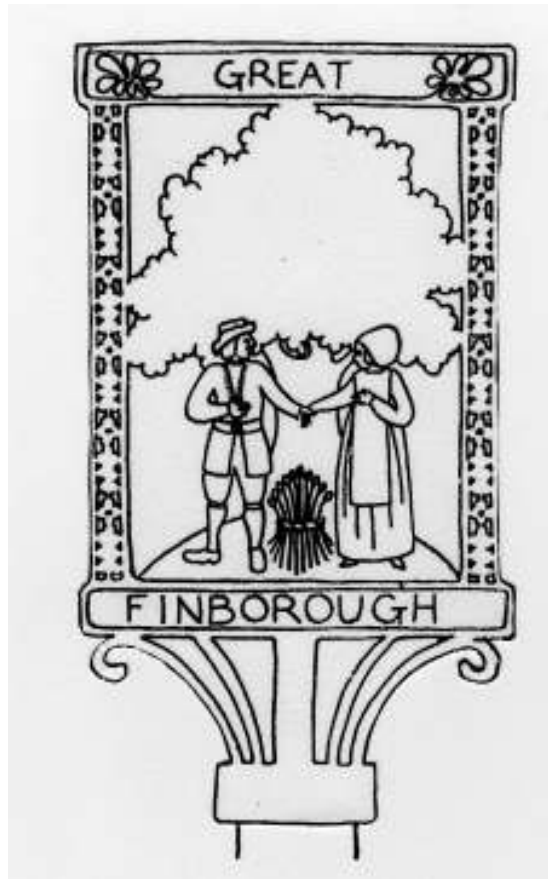


GREAT FINBOROUGH NEWSLETTER



**FEBRUARY 2009
ISSUE 395**

VILLAGE DIARY – FEBRUARY 2009

1	4.30pm	Sunday Explorers, St Andrew's Church
3	7.30	Local History Group, Church Room, Onehouse
4	2-4pm	St John's Adult Table Tennis, Church Room
5	7pm	Youth Café, Pettiward Hall
11	2-4pm	St John's Adult Table Tennis, Church Room
12	7.30pm	Garden Club meeting, Pettiward Hall
9	2pm	Pram Service, St. Mary's Church, Buxhall
12	4.30-6pm	Skylarks Children's Club, Onehouse Room
12	7-9pm	Youth Café, Pettiward Hall
12	7.30pm	St John's Adult Table Tennis, Church Room
23	7.30pm	Community Council, Pettiward Hall
23	2pm	Pram Service, St Mary's Church, Buxhall
25	2-4pm	St John's Adult Table Tennis, Church Room
26	4.30pm	Skylarks Children's Club, Onehouse Room
26	7.30pm	St John's Adult Table Tennis, Church Room
27	Tba	St Elizabeth Hospice Information sessions
28	7.30pm	Women's Institute, Buxhall Village Hall

VILLAGE DIARY – MARCH 2009

1	4.30pm	Sunday Explorers, St Andrew's Church
2	7.30pm	Parish Council, Pettiward Hall
3	7.30	Local History Group, Church Room, Onehouse
9	2pm	Pram Service, St. Mary's Church, Buxhall
12	4.30-6pm	Skylarks Children's Club, Onehouse Room
14	7.30	Quiz Night, Buxhall Village Hall
14	8-9.30am	Men's Breakfast, Onehouse Room
14	Tba	Lent Lunch, Coppinger Hall, Buxhall
18	Tba	Lent Lunch, Church Room, Onehouse
23	2pm	Pram Service, St Mary's Church, Buxhall
25	Tba	Lent Lunch, Church Room, Onehouse
26	4.30-6pm	Skylarks Children's Club, Onehouse Room

The Newsletter is produced by Great Finborough Parish Council and distributed to all households in the village free of charge

Editorial

I was pleased to see the Parish Council is developing welcome packs for newcomers to the village. I get so many positive comments from people moving here that they have been welcomed with open arms and are pleased to be joining a vibrant community. They tell me they rely on the newsletter for the information about what is going on but it will be great to have more detailed material to help people integrate quickly. How about those of you who have moved in recently letting Cathy or Sue know what you would have appreciated knowing early on?

15 February 2009 is the next copy deadline. Please put 'newsletter' in the header if you are emailing. Norman and I welcome visitors so if you need to contact me 'phone, email or call in to Park Cottage any time. The kettle is always on.

Sally Gooch

Advertising in the Newsletter

To help cover the costs of the Newsletter and reduce time spent billing advertisers, it was decided at the last Parish Council meeting to increase advertising rates from the March 2009 issue as follows:

Size of ad	Price per month	Price for 5 ads	Price for 10 ads
¼ page	£8	£36	£68
½ page	£11	£50	£93.50
Full page	£15	£67.50	£127.50

The above table includes a 10% discount which will be applied for payment in advance for 5 insertions (half year) or 15% for 10 insertions (full year). It was also agreed that any advertiser in arrears for more than three months would not have their advert inserted until full payment had been received.

Dave Norman

Report from the January Parish Council meeting

District Councillor's report

A public meeting to discuss the Stowmarket Area Action Plan was to be held at Hillside Community Centre on 13 January. It was decided to hold a special meeting on Monday 12 January to decide any response to the public consultation. Land bids will be out for consultation in February.

Police report

No report was received from the Police, but subsequent to the meeting, contact was made which established there were 4 incidents in the previous 2 months:

- Combs Lane flooded -11 November
- 3 horses in road – 4 December
- Accident in High Road, one injured, drink-driver detained – 14 December
- Badger hit in Combs Lane – 3 January.

The phone box on the green should also be back in operation by now. The safer Neighbourhood Team PC taped it up because of the missing Perspex sheets.

Triangle opposite the school

After discussion, it was decided to plant a tulip tree, which has a large leaf, and is very colourful in autumn. Rodney Self, the tree warden, will liaise with Debbie Ball to arrange tree planting this spring, and installation of protective stakes. The remainder of the project may take up to 18 months. SCC village enhancement has budget to complete other works and will project manage this, with SCC highways covering road edging. There has been a suggestion to move the village sign onto the triangle.

Welcome packs for Newcomers to the Village

Cathy Croome and Sue Green have suggested an A5 size loose leaf format folder for information not included in the village newsletter. It could include information printed from the

village website for those newcomers without web access. Final format will be decided after a meeting to decide the future management and content of the website. The Community Council will be taking the lead in this.

No increase in Council Tax precept

The Parish Council decided not to increase the precept for the next financial year, effectively providing a reduction given inflation still exists. It works out at about 45 pence per week for a Band D property. This covers the upkeep and running costs of the Pettward Hall, street lighting, parish grass cutting, various insurances (including public liability), litter collection and bins, dog bins and the clerk's salary. The council feels all the above represents good value for money.

Freedom of Information Act

The Council has adopted the new model publication scheme from the Information Commissioner's Office. Full details will be added to the website, and a summary notice placed in the village noticeboard. In the meantime, please contact the clerk for any information.

Litter Bins

It was brought to the Council's attention that some litter bins are being used for domestic waste. Apart from the anti-social aspect of this, it is also a criminal offence. Mid Suffolk will prosecute offenders. The twin bin scheme offers plenty of scope for disposing rubbish, and the household waste site in Stowmarket can always take any excess.

Stowmarket to Onehouse footpath upgrade

This is the footpath starting near Chilton Playing Fields and the Stow Lodge Centre, and going across fields to Onehouse. It will become part of National Cycle Route 51.

Dates for Parish Council meetings this year

The next meeting will be held on 2 March 2009. The remaining meetings are: 11 May, 6 July, 7 September and the 2 November. **Dave Norman, Clerk to the Parish Council**

Village Play Area & Car Park

You will no doubt have seen the progress on the play area and car park. We anticipate Gipping Homes will hand them over to the village around Easter. Detailed discussions have taken place with the developer on play equipment and layout as well as site landscaping. Management of the new facilities will be managed through the Community Council. Anyone interested in getting involved is welcome to attend any Community Council (next one: 23 February) or Parish Council meeting (next one: 2 March). See Diary for details.

Community Speed Watch – Volunteers Needed

As you may be aware this is an initiative that we are joining in partnership with Hitcham and Bildeston to help reduce speeding on the B1115. The partnership will have a speed camera and will report those caught breaking the speed limit to the Police for their attention. The camera will be used with warning signs at sites approved by the Police, but the intention is clear we want to make the B1115 a "no go" road for speeding. To make this work in the partnership villages we now need half a dozen volunteers from Great Finborough. Given there will be at least eighteen participants from the three villages this won't be a time hungry exercise. Full training will be given, as well as the use of a reflective jacket. If you are interested in getting involved, please speak to me, Richard. See Whos' Who for details.

Great Finborough resident fined £1,000 for dog fouling

Not a headline that any of us want to see, yet, I suggest, a real possibility in 2009. Sadly, I've written on this subject regularly. Most of our neighbours don't want to live in an

environment where dog excrement is left lying around on footpaths, including near the school; often close to the provided dog waste bins. Dog fouling is still a significant problem in the village.

Polite requests in the newsletter seem to have little effect on the few who continue to act thoughtlessly to the detriment of the majority. Unfortunately this means the Parish Council has little alternative other than to take formal action against offenders. This could lead to an owner being fined up to £1,000.

Please don't let this happen. Apart from the prospect of prosecution and a fine it will inevitably lead to bad feeling in the village. If you own a dog (or dogs), please, clear up after it, or ensure your child or dog-walker does the same if they are taking the dog 'round the block'.

Also, if you witness dog owners or walkers within the village leaving their pet's mess, then please pass as many details as possible to one of our Parish Councillors - in complete confidence if you wish – and we will pursue it with the appropriate authority.

Richard Brice

Chairman, Parish Council

Report from the last Community Council meeting

Pettiward Hall Group

The leaky roof has been fixed, and a window that was broken also repaired.

Youth Engagement

The Christmas party went well and Chris Nettleton thanked all adult helpers for their support.

Sue Green

County Councillor's Report

2009/10 Budget

The Council is working through its budget savings for next year. I am particularly concerned at the reduction in funds for community safety, the home care service and the increase in charges for care. As I predicted last year, the increase in charges for day care centres has resulted in the closure of the Laurels in Felsham in December - a real loss to those elderly people who used it regularly.

I am also very concerned at the proposed reduction in dance and drama teaching as well as extracurricular sports which will not be funded at all. It will be down to the school to find the money. This seems completely to fly in the face of reducing child obesity and social behaviour issues.

Recycling

I am pleased there has been a significant reduction in household waste going to landfill, which must still put into question the planned incinerator either at Great Blakenham or Sproughton.

Stowmarket Relief Road

B1115 Stowmarket relief road is due to be completed in January 2010. First stage is a new car park next to the Ipswich bound railway platform currently under construction.

Children's Promise

Do you know a child born on 20.12.04? If so, they can register by 1 April at www.london2012.com/childrenspromise and they could be chosen to take part in the opening or closing ceremonies.

Public Questions – time to submit

The motion for public questions, which was submitted by the Liberal Democrats, has now been put into action. The County Council has published instructions on how to submit questions for each full Council meeting. Questions must be submitted on

the Friday before the next Full Council meeting by 10am either by post or email:

*The Committee Services Manager, Suffolk County Council
Endeavour House, 8 Russell Road, Ipswich, Suffolk, IP1 2BX*

Email: committee.services@resman.suffolkcc.gov.uk

It is also possible to fill in a specific form to submit your question at:

<http://www.suffolk.gov.uk/CouncilAndDemocracy/question.aspx>

In asking a question you will be provided with a response, and then an opportunity to ask a supplementary question on the day. The period of public questions will be a total of 20 minutes.

Adult and Community Services awarded 2 stars

Adult and Community Services at Suffolk County Council have been awarded 2 stars by the Commission for Social Care Inspection. This is the same overall rating that was awarded last year but there was improvement in a number of areas. Adult and Community services in Suffolk have previously been awarded 3 stars, but year on year cuts totalling 42 million pounds have taken their toll. We were also alarmed to read that in the budget proposals for next year residential home fees will double to £694 per week for those with more than £22,500 in savings.

Penny Otton

TRM Web Design

website design – website hosting – database integrated sites
search engine optimisation – virtual reality panoramas
online video – flash/shockwave media – multimedia cd-rom
production

01473 890994 07876 024214 www.todd.co.uk trm@todd.co.uk



Combs House, Stowmarket Business Park, Needham Road, Stowmarket IP14 2AH

Tel. 01449 676966 E-mail office@cedarwoodvets.co.uk

- State-of -the-Art Operating Theatre Suite
- Innovative Digital X-ray system
- Full modern dentistry suite
- Separate dog, cat & isolation kennels
- Full blood analysis facilities in-house for rapid turn-around

In fact— everything to keep your pets healthy & happy

Also;

- Puppy Clinics, weight clinics, old dog & cat health clinics
- If there's anything you'd like to ask us, give us a call, drop us an e-mail or better still, arrange to come and see us & Ross or one of the team will show you round

Large FREE car park

**Surgeries throughout the day by appointment
Plus a 24 hour EMERGENCY SERVICE**

Practice Opening Hours
8:30am-6.00pm Monday-Friday
8.30am-12.00pm Saturdays



WWW.CEDARWOODVETS.CO.UK

News from your District Councillor - John Matthissen

Interesting items on local Planning Enforcement this month. Two bathrooms added to new houses without planning permission were refused retrospective permission and have now been dismantled. A fence proximal to the Grade 2 listed Finborough Hall and The Coach House, again erected without consent, and subsequently refused retrospective permission, has also been rejected by an appeal inspector.

You may have read in the press that two people who fly-tipped rubbish in Mid Suffolk were taken to court, resulting in fines and costs totalling over £1000. Very locally another person who fly-tipped bottles and household rubbish was traced and given an £80 fixed penalty on admitting the offence. Please do use the green bins, black bins and household recycling and waste site; the facilities provided are convenient, and much cheaper than fines.

Thanks to everyone who recycled their Christmas Tree – Finborough had the most with 16 trees. We will ensure earlier publicity next Christmas.

The New Year's Day walk was very successful, with some 30 people from most of the local villages taking part, covering distances of about 4 to 7 miles, depending on their starting point.

Tools with a Mission - www.TWAM.co.uk - can make use of many kinds of tools you no longer need, shipping them out to needy people around the world. To get in touch, see Who's Who.

Wanted

Has anyone a music stand that they would like to donate to the Benefice choir? If so, please contact me on 737268. Thank you.

Claire



LEEWAY
WINDOW CLEANING SERVICE

**WE CAN REACH UP TO 4 STORIES HIGH
WE WASH THE FRAMES, SILLS, DOORS, SKYLIGHTS
AND REMOVE ALGAE AND COBWEBS !**

**ALL WORK IS GUARANTEED + AND IS COVERED BY
FULL PUBLIC LIABILITY INSURANCE.
WE ALSO CLEAN CONSERVATORY ROOFS**

PHONE FOR A FREE QUOTE 01449 737508

LUSH BEAUTY THERAPIES

**OFFERING WAXING, ANTI AGEING FACIALS, MANICURES, PEDICURES,
TINTING, SIENNA SPRAY TANNING, SPECIAL OCCASION MAKE UP,
INCH LOSS BODY WRAPS, BOTOX, FILLERS, TEETH WHITENING.**

**PERSONALISED GIFT VOUCHERS
WHY NOT HAVE A COFFEE MORNING
AND I'LL PROVIDE MINI TREATMENTS**

**LADIES' PAMPER /SPRAY TAN PARTIES
CONTACT LEESA 01449 737228-07989 988253
EMAIL:lushbeauty1@btinternet.com
www.lushbeautytherapies.co.uk**

LAND ARMY DESIGNS

Garden design and build

Call Jane Hamblin

01359 231344

jane@landarmydesigns.co.uk

For an instant garden try “Bed in a Box”

www.bedinabox.net

CK CARPETS

A great range of quality carpets
and
vinyl to choose from at affordable prices

Home selection, Free measuring and Planning

Old and new carpets fitted/refitted

CALL CRAIG 07742 112825
01359 244416

Great Finborough and District Garden Club

Thanks to all of you who purchased Bird Seed in December as a result of which we were able to make a donation of £72 to EACH. Our next regular seed order will be placed in March with delivery mid month. Following the recent cold weather quite a few people are running low so I am going to do a small order, half sacks etc, in February. If you would like to order some more seed please contact me before 10 February for full details.

Our next meeting – on 12 February - will be a talk with slides on the A-Z of Roses by Simon White who works for the world famous Norfolk Rose Nursery. He will enlighten us into the cultivation and care of roses and show us lots of fabulous pictures. There will also be cut-price plants for sale. Details in Village Diary.

If you are interested in joining the garden club or would like to join us for any event you will be very welcome. Membership is only £10 per household per year. For further information contact Judith Cameron on 672978 or judyandian@btinternet.com or me on 674401 or john@abbeyclassics.co.uk **John Davey**

News From

The Friends of Great Finborough Primary School *Fundraising Success*

We had fantastic support at our Christmas Bazaar raising a total of £644.20 for the Friends fund. Many thanks to all those who attended this event and to those who kindly donated their time, equipment and prizes. We are always in need of any raffle prizes for our fundraising throughout the year. If anyone has any unwanted Christmas gifts they will be gratefully received. If you wish to make a donation please bring along to the school and leave with the office.

Easy Search Website

If you are an Internet Shopper why not help the Friends raise funds by using the free website: www.easyfundraising.org.uk and follow the links. Over 400 retailers can be accessed from this site and up to 15% from each online purchase will be donated to the friends.

Squirrel Garden

The primary school garden for the children is starting to take shape. We started the gardening club with the children on 21 January. We will be planting bulbs and starting off seeds ready for planting out. If anyone has any trowels, kneelers, gloves, seeds, or anything that that needs a good home that they wish to donate to the club please feel free to leave them with the primary school or contact Lesley Cass (675970) Julie Francis (736185) or me on 678480. **Sharla Goldsmith**



Charisma Hair

86a Forest Road – Onehouse
01449 677202

- Qualified and friendly staff
- Ear piercing
- Nail Technician
- Full range of styling and colouring and techniques
- Indola products for all your hair and care needs (Retail sizes available)

(Closed all day Mondays)

Would you like to volunteer for the Hospice?

St Elizabeth Hospice is holding information sessions on Friday 27 February, for anyone who is interested in volunteering at events and in the community as part of the fundraising team. Roles volunteers take on include helping with raffles, an hour or two collecting for the Hospice at supermarkets or in town centres and providing assistance at events such as running a stall, marshalling, registration, refreshments and car park attendants.

Volunteering is rewarding, you get to meet people and make new friends and there is great team spirit. Volunteering is a great way to use your free time positively and for a worthwhile cause. It is another way of enhancing your CV with new skills and experiences and most importantly, you will definitely have fun!

There are two drop in sessions: 2-4pm and 5-7pm in the education centre at St Elizabeth Hospice on Foxhall Road in Ipswich. The information sessions will be a chance to find out more about the work of St Elizabeth Hospice's fundraising team and the volunteering roles available, as well as the opportunity to meet staff and existing volunteers. For more information, please contact the fundraising team on 01473 723600 or email fundraising@stelizabethhospice.org.uk

Women's Institute

We had two treats in December when, firstly, we had a very nice pre-Christmas meal at the Duke of Marlborough in Somersham and, secondly, our usual meeting, which had a distinctly Christmas flavour. At that meeting, Rosemary Roe demonstrated how to prepare floral decorations, using shrubbery in season, and creating very attractive centre pieces for Christmas. Such was her ability to demonstrate and instruct that even the most artistically challenged of us felt that we could have a go and were inspired to do just that.

Rosemary very kindly donated the arrangements that she had made to our raffle and they were eagerly snapped up by the lucky winners.

Next, we were treated to a visit by the handbell ringers led by David Steed. David, Lesley Wilson and David & Catherine King played a selection of popular Christmas carols and in appreciation a collection was taken up for their chosen charity, EACH. The evening wound up with an excellent buffet. We take it in turns to prepare the buffet and such is our membership that in a team of four, your turn is once a year. By the time you are reading this, we will have enjoyed a barn dance and an outing to the pantomime. Our next meeting is 18 February when the speaker is 'Britain's Best Mrs Mop'! Doors open at 7pm for a 7.30 start. Visitors welcome.

Anne Hicks

Quiz Night

A fun quiz night will be held on Saturday 14 March at 7.30pm in Buxhall Village Hall. Teams of up to 6 people, £3 per person. Please bring your own nibbles, drinks and glasses. Grand Draw. To book a table please call Mim or me on 736598. In aid of Village Hall Funds. Your fantastic support in October raised £252.00.

Keith Proctor

Onehouse Local History Group

We meet on the 1st Tuesday of the month at the Church Room, Forrest Road, Onehouse at 7.30pm. This year the group is looking at "Change 1900 to 1999"

3 February: Richard Gale: The story of the Golf Club. As part of the Golf Club is in Finborough, this talk will be of interest to our village as well

3 March: Onehouse School: once again, the school had links with Finborough so this topic will also be of interest.

A warm welcome to everyone.

Pauline Llewellynn

Local History Festival: 20-21 June 2009

Please put a note of this date in your diary! A small team of villagers are busy looking into the past of the village in preparation for this festival. We thought you might like a preview. Great Finborough Primary school has recently been very successful in an inspection by the Church of England Inspectors. Here is the report from an earlier inspection:

REPORT OF RELIGIOUS INSTRUCTION

Diocese of St Edmundsbury & Ipswich, Rural Deanery of Stow.

March 23rd, 1915,

Rev FitzPatrick Correspondent

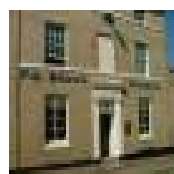
The Rev. J Hancox, Rector of Onehouse, very kindly acted as my deputy in inspecting the School in Religious knowledge, & reports that the general quality of RK was very fair, repetition very good, discipline & tone very good, & the School, in regard to Religious Education as a whole, good.

"The singing of Infants showed careful training. In the larger group it was rendered with intelligence & feeling." He recommends that it would be helpful to the older children soon to pass out of school if the connection of the lessons with their daily life could be kept in mind more directly. I would add to this that the time spent on Church History, valuable as it may be, might be spent more profitably on the Study of the New Testament.....

Signed Fennell FitzPatrick

It's good to know that singing in the school then was up to the same high standard as was demonstrated in the recent Christmas play - but I am glad the children are no longer tested on "repetition". If you have old photos of the village or memories you are willing to share, please contact me on 612822 or email at boardedbarn@btinternet.com We'd love to have your input. We would copy any photos into our village archive file and return the original to you.

Mary Williams



F. G. BROWN – OPTICIANS
Denmark House, 41 Bury Street,
Stowmarket.
Tel:- 01449 612812/674030

As independent opticians we offer a more personalised
eyecare service that you can trust for all the family

Professional Eyecare – Quality Products – Personal Service

Opening hours:-Tuesday-Friday 9.00 am – 5.30 pm
Saturday 9.00 am – 5.15 pm

Your sight care is our priority

The Mill House Cattery

Brand new purpose built heated and insulated chalets

Family run business

Family chalets available

Peaceful rural setting

Open all year

Inspections welcomed

Discount given on all long term bookings

For bookings or further information

Please call:

Mark or Lisa Gilson 01449 674853

2008 Number Quiz - Results

There were 14 entries with 'correct' answers for the 2008 Number Quiz and the furthest entry came from Guernsey. Congratulations to the overall winner - Janet Proctor from Needham Market. The winner of a bottle of wine was Anne Scott from Onehouse

A very big thank you to everyone who sold Quiz Sheets and to all who took part. A record total of £240 was raised for St Mary's, Buxhall Fabric Fund. The answers sheet is available from Sally Gooch at Park Cottage in hard copy or by email – on request.

Well done to all those who spotted the 'deliberate' mistake – Prince Edward is the Earl, not the Duke, of Wessex. Finally, yes, I have already started compiling questions for the 2009 Number Quiz. I will attempt to make them a bit easier!

Judith Hickman

Stowmarket & District Camera Club

We had our first meeting after the Xmas break with a three way battle between Stowmarket, Framlingham and Wymondham clubs. The evening was enjoyed by everyone including the refreshments halfway through. Wymondham club was the overall winner. 2 February's meeting entails a new photo discussion with members of the club and on 9 February we have an internal open competition.

On 23 February we have the East Anglian Federation exhibition slides. Looking ahead to Saturday 14 March the club is holding an exhibition to celebrate 32 years of Stowmarket & District Club at St Peter's Church Hall. There will be prints to view and purchase, demonstrations and a family portrait section. Half price fees for new members. Contact me on 01728 724077 or visit our website www.stowmarketcameraclub.co.uk

Paul Mothersole

Children's Society House Boxes.

If you have a Children's Society box please could you return it to me for emptying. The Society relies on box and house to house collections as an important source of its income, so please support the excellent work they do for children in Suffolk and nationally. Thank you to everyone in Great Finborough who has a house box; your help is really appreciated. If you would like one, please contact me.

I have been co-ordinating St Andrew's box collection for many years now and would like to hand over the task to someone else. If you could spare a few hours a year and would like to get involved, please phone me on 612822. Thank you.

Mary Williams

Welcome

If you know someone newly arrived and living in the village, or friends and neighbours who are moving on, please let me know.

Sally Gooch

MOBILE HAIRDRESSING

**Cuts, Blow Dry's, Perms, Colours
And Highlights**

**For an appointment call
Julie**

07832 227 117 or 01449 616 708

EAST ANGLIA POTATO DAY

**SATURDAY
14 FEBRUARY**

at

STONHAM BARN

STONHAM ASPAL, IP14 6AT

(on A1120, just east of junction with A140)

Follow brown tourist signs)

9.30am to 2.00pm. Admission £1.50

100+ VARIETIES OF SEED POTATO

12p per tuber for general range

20p per tuber for premium range

POTATO QUESTION & ANSWER FORUM

At 12 noon, with experts

Colin Randall and Alan Romans

Plus SEEDS, BOOKS, TOOLS, PRODUCE

REFRESHMENTS, CHIP TASTING

SEEDSWAP, COMPOST ADVICE

For more information

Visit our website www.eapd.btik.com

Tel: 01206 570859, 01787 375153 or 01953 498651

Email: tetley@macunlimited.net or cathy@wood21.plus.com

Councillors Give Blood (as well as Sweat, Toil & Tears!)

Despite the obvious popularity of the Christmas Eve session at Hillside, Stowmarket, it still seems that only around 6 in every 100 of us are regular blood donors. This prompted me to enquire how many other Parish Councillors were, shall we say, 'regular'. Virtually all are regular donors or have given blood in the past. Interestingly, almost all blood groups are represented on the Council.

Did you know there are four blood groups: O, A, B & AB. You can now donate up to three times each year. Up until the 1970s donated blood was not stored in plastic packs, but in glass bottles - as one or two of our Councillors might well recall! Trimley Red Devils FC is sponsored by the National Blood Service. Mr Spock's blood type is T-negative...and his blood is green! Anyone considering becoming a donor can give blood from the age of 17 and from 1st January 2009 the upper age limit has been removed.

So, if you've never donated before, or you're a 'lapsed' donor & would like to come along to a local session, why not have a chat with one of the Parish Councillors that is a regular donor. You can also call the Donor Helpline on 0845 7711 711 or log on to www.blood.co.uk

Mark Brewster

FHOBS Lunch Club

FHOBS stands for Finborough, Harleston, Onehouse, Buxhall and Shelland: the five parishes of the benefice. Under this umbrella, we have a thriving Lunch Club with upwards of 40 members who enjoy a meal and some valued comradeship. This takes place on the last Tuesday of each month: 12 noon for 12.30 in Buxhall Village Hall. The one exception is December each year when we have a Christmas Tea Party instead of the lunch. A small charge of £3.50 is made to cover expenses. We would be delighted to welcome new members. Please contact me on 01449 737814.

Jill Biles

ST JOHN'S TABLE TENNIS

Wednesday Afternoons
2-4pm in the Church Room
4, 11, 18, 25 February 2009

Thursday Nights
7.30-9.30pm in the Church Room
12, 26 February 2009

Why not try a bit of gentle exercise with a game of Table Tennis? New players welcome. The cost is just £1 per session.

Give me a ring for further details. Derek Ames (Tel. 613328)



Frances O'Flaherty
Paediatric Physiotherapist
(Bsc, MCSP, SRP, MAPCP)
Bobath Trained and Certified

A physiotherapist specialising in assessment and treatment of premature babies through to 16 year olds.
Experience in treating a wide variety of children's conditions including

respiratory (cystic fibrosis, bronchiectasis)
developmental delay (pre-term babies, down's syndrome etc)
brain/nervous system (cerebral palsy, head injury etc)
joints, bones and muscles (torticollis, talipes, juvenile arthritis & injury)

t: 01449 774 727 e: kidsfizz@gmail.com



Can you order your
"cerveza, vino y tapas?"



I can teach you!

Phone **Andrea**
on **01449 736955**

THORPE PLUMMER – ACCOUNTANTS

A small established firm offering a personal, professional service. All aspects of accountancy and taxation covered in the most cost effective way. Advice given on tax and business management for both individuals and companies with a view to maximising income and reducing the tax burden.

Contact: 01284 750938 (tel/fax)
thorpeplummer@aol.com

CHESTNUT HORSE Great Finborough

Now under the management of Chef Leonel Girao

Serving restaurant food at pub prices
Open every day for food
12 - 2.30pm and 6 - 9pm

Sunday roasts served Tel: 01449 612298

Men's Breakfast

Saturday 14 March

Church Room, Onehouse
8am-9.30am

Speaker:
Peter Schwier of
Metfield

There will be an offering to cover expenses. Please book places with Derek Ames by Wednesday 11 March (Tel. 613328) indicating continental or traditional breakfast.

Peter was brought up in a Christian home and became a Christian when he was young. He went on to make a re-dedication at a Billy Graham rally in 1960's. He then spent some time working overseas with the Baptist Missionary Society.

He now works in arable farming. He has a wonderful wife (she says) and two sons. He was one of the first people to be ordained as an Ordained Local Minister back in 1991.

Pettiward Hall Mats

This is to clarify some confusion that has arisen about who can use the 70 mats at the Pettiward Hall. They were purchased by a villager for use by anyone who uses them for appropriate activities in the Hall. They are mainly used by the Kickboxing Club run by Marlon Hunt, which is the only group currently authorised to take them to other locations for use in competitions. They are useful for activities including Keep Fit, Yoga, Pilates and for floor based play at Pre-School and Youth Cafe.

They cost £1000 and there is no funding source to replace them when they wear out. It is vital, therefore, that they are used with care. Shoes must not be worn when using the mats and tables and chairs must not be placed upon them. Food and drink is not allowed near the mats and adult supervision is required to make sure they are put together and taken apart properly. Marlon has asked that the edging is left on some of the mats as this will save him and others time setting them up. They must be put away carefully after use please. If looked after they will last for years. If a group using them damages them, that group will have to pay to replace them.

Des Barker

St Nicholas Hospice

Hi, we are Community Fundraisers for St Nicholas Hospice Care. Our job is to work in and with the local community to raise vital funds for the Hospice. We support people in all their fundraising endeavours as well as holding fundraising events for local people to enjoy. An important part of our role is to spread the word about the essential service the Hospice provides to the local community and to encourage as many people as possible to join us in support of our work.

Are you a member of a social group or club? Perhaps a church or a Women's Institute? What about your local school? If you or anyone you know would like to hear more about St Nicholas Hospice Care we would be delighted to come and talk to your group. There is no charge for this service and talks are tailored to the age and size of the group.

We are available during the day, evenings and weekends: whenever your group meets we can be there. We are passionate about the Hospice and the vital service they provide to local people, we would love to share this passion with you. Together we can make a difference. To arrange a talk please call us on 01284 747624. We look forward to meeting you soon.

We also have a Legacy Officer, Margaret Lee, who you can contact on 01284 755000. Leaving a legacy to St Nicholas Hospice Care is another way you can help us to secure our long term future. If you have never made a will or have not updated your will recently give Margaret a call to see how easily this can be done. We will be holding Wills week during June 2009 when appointments can be made with local Solicitors who have agreed to take part and waive their normal fee for a donation to St Nicholas Hospice Care.

Sue Long and Ian Norris



Andrew Bingham
INDEPENDENT FUNERAL SERVICE

Stowmarkets Independent Family Funeral Service

24 Hour Personal Service • Private Chapel of Rest • FREE Parking

Telephone: **01449 771666**
www.andrewbingham.co.uk

17 Charles Industrial Estate, Stowmarket, Suffolk IP14 5AH

Golden Charter
Funeral Plans



**BARGEWELL
SKIP HIRE**

2, 3, 4 & 6 Yard Skips

- Long or short term hire
- Delivery service 7 days a week
- Fast friendly service

Stowmarket
01449 615056
Mobile 07770 452378
High Rd, Gt Finborough, Suffolk



St Andrew's Church

It may feel a long time ago – but nonetheless I'd still like to thank all who were involved in any way with the services over the Christmas period. The church looked lovely and it was a delight to welcome so many people.

We now have a sound system installed in the church. There have been one or two gremlins but we hope that these have been ironed out. The system will be particularly useful when the church is full but it will also be of value on a regular basis as it links to the loop system.

Advance notice of the Lent lunches planned across the Benefice is elsewhere – do come along and support these if you can.

'To respond to human need by loving service' – That's something that many people do almost instinctively - in a variety of ways, perhaps not even recognising that that is what we're doing. It's also what we are called to do as the 'Third mark of Mission'. At our services across the Benefice on 8 February we will be recognising the work that so many do – often unnoticed, and also beginning to think about what it means for each of us and for the church community as we respond to that call to serve others. Why not come along and see what's going on?

Trudy Gray

Pop in For Coffee at St Andrew's Every Saturday Morning from 10.30am to Noon

This is an informal opportunity to have coffee and a chat - perhaps when you're passing on a stroll around the village or visiting the churchyard.



From the Ministry Team

Dear Friends,

February is renowned as the month of the feast of St Valentine but it is also the month of the feast of one of my favourite saints, St Polycarp. Unlike St Valentine, about whom little is known, St Polycarp is a well documented father of the early church. He is interesting because he links the Bible to the figures of the early church of the 2nd century. He knew Jesus' friend John and many of the key figures who started to make the church what it is today – Irenaeus being the most prominent.

He catches my imagination, 'though, because of the nature of his martyrdom. Having lived a fairly quiet life of study and teaching he was arrested c.155AD at the age of 86 and condemned to die as a member of an illegal religion. So the story goes, the Roman proconsul took pity on the old man and offered him an opportunity to say 'Caesar is Lord', burn a pinch of incense at the imperial shrine and escape death. Polycarp is said to have replied, 'Eighty-six years I have served Christ, and he never did me any wrong. How can I blaspheme my King and saviour?'

He's worth mentioning at this time because he is an example of a man who not only kept true to who he was when the times became frightening, but who spent his life preaching moderation, honesty and the importance of the immaterial – love, life and God – over material goods. At times like these, when many of us are not sure how we will make ends meet, it is easy to become enslaved by fear and by the property we own and hope to own. Polycarp reminds us to stay focused on the things that are important, and – hard as it may seem – refuse to allow our fears to push us into being someone less than we can be.

We remember Valentine to escape for a day in gestures of Romantic Love. When we remember Polycarp we find refuge in a love that lasts a lifetime and gives us courage in the dark times. Every Blessing to you and yours.



Skylarks Children's Club

Our first session in January began with our Skylarks listening to the story of the visit by the Three Wise Men to see the baby Jesus. They then enjoyed acting out the story in costume and very good they looked too! This was followed by some craft activities, one of which was the making and decorating of a King's crown.

The Club meets on the second and fourth Thursdays of the month during term time from 4.30pm to 6.00pm in the Church Room, Onehouse and is open to children of primary school age who live in Buxhall, Great Finborough, Harleston, Onehouse and Shelland. For more information, please contact Derek Ames (613328), Trudy Gray or me on 736487.

Christine Hagger

News from Michael Green working for the Church Mission Society in Jordan

He is much happier now he has new accommodation in Amman and a new working schedule. He says that the violence in Gaza is unsettling for the whole region. Please pray for Michael at this time.

Derek Ames

Pram Service

9 and 23 February

2nd and last Monday
of each month
at 2pm in Buxhall Church.

An informal service for pre-schoolers (0-5)
and their entourage
Come along for songs, stories and squash!



FROM THE REGISTERS

Baptism at St Andrew's, Great Finborough

Caroline Barbara Carr	30 September
Kirsty Louise Catchpole	30 September
Jasmine Mary-Anne Wintle	30 September



Confirmation at St Mary's, Combs

Charlotte Isobel Cobbald	30 November
--------------------------	-------------

Cremation at Ipswich Crematorium

Edith Hickman, Buxhall	19 December
------------------------	-------------

Cremation at West Suffolk Crematorium

Frederick Brown, Harleston	14 November
Celia Allison, Onehouse	21 November
Evelyn Lister, Buxhall	30 December

Funeral at St Andrew's, Great Finborough

Dora Mortimer (92 years)	9 January
--------------------------	-----------

Baptism at St Mary's, Buxhall

Ellis Michael Brown Newell	18 January
----------------------------	------------

Committal at St John the Baptist, Onehouse

Jennifer Hill (previously Quilter)	22 January
------------------------------------	------------



LENT LUNCHESES

Are being planned at a number of venues:

Buxhall: Saturday 14 March at Coppinger Hall
Onehouse Wednesdays 18 & 25 March in the Church Room
Great Finborough Wednesday 1 April (venue to be confirmed).

More details next month – but pop at least one in your diary now!



Murdoch Joinery

Quality bespoke carpentry and joinery at competitive prices

Doors
Windows
Staircases
Gates

Anything in wood – from any wood
No job too small

Give Nathan Hart a call anytime on
07845 938 670 for free estimates



Meeting
First Sunday of the Month at
St Andrew's Church, Finborough
from 4.30 – 5.30pm

Sunday Explorers

Next Session:
Sunday 1 February

Games, crafts, stories, singing (and who knows what else!)

Open to all between 7 and 12 years, if you'd like more
information just contact Trudy (674819) or Nigel (675344).

Jackbridge Cottage

Friends or family coming to stay? Need some extra space for a week? This could be the answer you are looking for.

Jackbridge Cottage is a brand new cottage available for rent, situated on the outskirts of Great Finborough in an idyllic rural location with beautiful views. Ideal for a couple, this charming cottage is well equipped, comfortably furnished and has a four star rating from the Quality in Tourism Board.

For further details or to book the cottage please contact Teresa Pemberton.

Farm Assured Beef

Grass fed hand reared beef available on your doorstep. All our cattle at Jackbridge Farm are grazed through the summer months on local pastures that are free from artificial fertilisers and sprays.

In the winter months they are fed on home produced silage and cereals. All our beef is hung to mature, to enhance its flavour, and is then traditionally butchered into convenient cuts.

The beef comes freshly frozen in a variety of pack sizes and with a variety of different cuts, such as joints, casserole beef, mince and burgers.

To place an order for beef or to find out about the holiday cottage please contact:

Teresa Pemberton At Jackbridge Farm, Jacks Lane,
Great Finborough,

Tel: 01449 672177 e-mail: pembertons@jackbridgefarm.plus.com



CHURCH SERVICES IN THE BENEFICE FOR FEBRUARY

Weekday Morning Prayer

Monday	Onehouse	8.00 – 8.30 am
Friday	Great Finborough	8.00 – 8.30 am

Sunday 1 February Candlemass

Malachi 3.1-5; Hebrews 2.14-18; Luke 2.22-40

Sung Eucharist (1)	Buxhall	9.30am
Reflective Morning Prayer	Shelland	9.30am
Holy Communion (1)	Finborough	11am
Family Service	Harleston	11am
Evening Prayer	Onehouse Room	6.30pm

Sunday 8 February 3rd Mark of Mission

Deuteronomy 10.17-21; James 2. 14-17; Matthew 25.31-40

Matins	Buxhall	9.30am
Holy Communion (1)	Harleston	9.30am
Holy Communion (2)	Shelland	9.30am
Family Service	Onehouse Room	11am

Evening Prayer	Finborough	6.30pm
Thursday 12 February		
Holy Communion (2)	Shelland	10am
Sunday 15 February 2nd Sunday before Lent		
<u>Proverbs 8.1,22-31; Colossians 1.15-20; John 1.1-14</u>		
Matins	Shelland	9.30am
Holy Communion (1)	Finborough	11am
Family Communion (1)	Onehouse Room	11am
Family Service	Buxhall	4pm
Sunday 22 February Next before Lent		
<u>2 Kings 2.1-12; 2 Corinthians 4.3-6; Mark 9.2-9</u>		
Holy Communion (2)	Buxhall	9.30am
Matins	Harleston	9.30am
Time2Worship	Finborough	11am
Holy Communion (1)	Onehouse Room	11am
Wednesday 25 February Ash Wednesday		
HC and Imposition of the Ashes		7.30pm
Thursday 26 February		
Holy Communion (2)	Shelland	10am
<i>Holy Communion (1) = modern rite (order 1);</i>		
<i>Holy Communion (2) = BCP (order 2)</i>		
WHO'S WHO IN GREAT FINBOROUGH		
Richard Brice	Chair, Parish Council/Community Council	676249
Dave Norman	Clerk, Parish Council	737263
davidanorman@tiscali.co.uk		
John Matthissen	District Councillor. 3 Wash Lane Corner, Great Finborough, IP14 3BJ	771742
john.matthissen@midsuffolk.gov.uk		
Penny Otton	County Councillor	737870
penny.otton@councillors.suffolkcc.gov.uk		
Revd. Lindsay	Priest in Charge	616010
Llewellyn-MacDuff	<i>The Rectory, Onehouse</i>	
Revd. Trudy Gray	<i>The Old Police House</i>	674819
Lesley Cass	Church Warden. <i>Valley Farm</i>	675970
Brenda Grimaldi	Church Warden. <i>Gardenside</i>	612440
Sally Gooch	Newsletter Editor	677940
sally.gooch@btinternet.com		

John Davey	Neighbourhood Watch Co-ordinator	674401
Delia Prior	Gt Finborough & Buxhall Under 5s	07708 362697
Beverley Baxter	Great Finborough & Buxhall Brownies	677517
Scott Murkin	Chair, Team Finborough. <i>11 Middlefield Drive</i>	
Charles Freeman	Royal British Legion	736262
Keith Proctor	Candlestick Club	736598
Judith Cameron	Great Finborough & District	672978
ianandjudy@beeb.net	Garden Club	
Sharla Goldsmith	Charity Bingo	678480
Nigel & Jeannette	Post Office & Village Shop	612274
Leonel Girao	The Chestnut Horse	612298
Stephen Dodd	Great Finborough Primary School	613208
Nigel Brown	Chair of Governors, Primary School	675344
PCSO Claire Cox	01284 774100 x3104 or via 01473 613 5000	
Combs Middle School (674666)	Stowmarket High School (613541)	
Stowmarket Health Centre		776000
Combs Ford Surgery		678333
Stowmarket Library		613143
Pettiward Hall Bookings		676249
Village website: www.great-finborough.suffolk.gov.uk		
Primary School website: www.greatfinborough.suffolk.sch.uk		